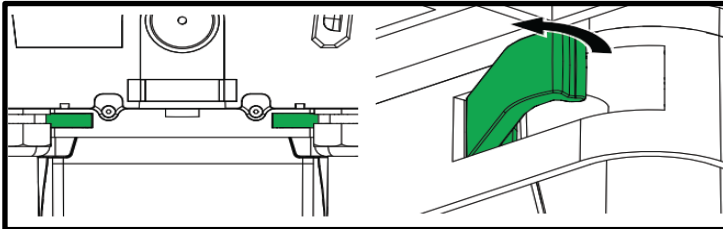
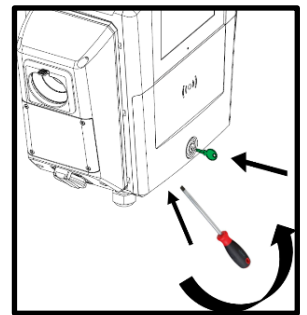
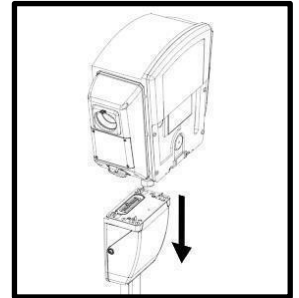


T2Max - Quick Installation Guide

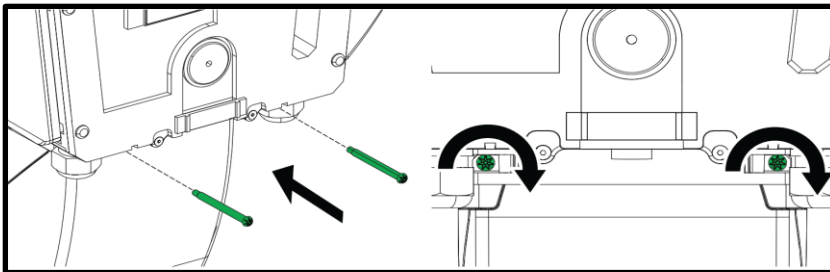
You can find the official installation, operation, and maintenance instructions by scanning this QR code or by visiting : parkingenergy.com



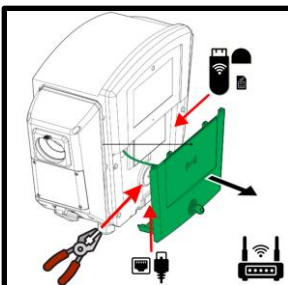
1. Lift the T2Max Charging Station above the Quick Connector
2. Ensure that the rectangular extensions located at the bottom of the T2Max aligns with the corresponding openings on the Quick Connector.
3. Once the T2Max is aligned with the Quick Connector, you can lower it downward.
4. Note: The spring pressure on the contact surfaces of the Quick Connector is substantial, creating significant resistance during the installation of the T2Max.
5. Press the T2Max down from both with your both hands alternating pressure on both sides of the charger, until the charger is positioned securely on the Quick Connector.
6. Unlock the T2Max with a key and by using a screwdriver as leverage to release the locking tabs on the lower front cover. This will allow the lower front cover to hang freely, suspended by the cable.
7. Open the hinged covers that are covering the locking plate holes between the charging station and the quick connector. Use a flat-head screwdriver. Check if the D6 mm holes of the locking plates are aligned. If the holes are not aligned, repeat step 5 from this guide.



8. Install the safety screws into the holes of the locking plates and tighten them to a maximum torque of 4 Nm, using the special tool sold separately (Part No. 3501310).



9. Turn the power on by rotating the main switch shaft clockwise using pliers or a small adjustable wrench. If a 4G modem with a SIM card is needed for the device, it should be connected at this stage to the USB port located under the cover, before turning on the power. The SIM card can be ordered from the charging operator or sourced independently. In the T2Max, one 4G modem shares the connection with neighboring devices via a mesh network, as does an Ethernet cable connection. The mesh network can typically support up to 5 devices. During installation, assess the required number of modems to avoid unnecessary installations. The instructions how to change the CPO (OCPP) can be found on our website: www.parkingenergy.com



Installer's Checklist

Submit the installation details in the format requested by the CPO (often in xls/csv file).

Fill out the form once for each group. Devices protected by the same fuse can be reported on a single form.

Customer Name: _____

Location Name: _____

Location Address: _____

Parking Spot Number: _____

Device Identification Code: Left _____ Right _____

Main Fuse Name and Size (A): _____

Front Fuse Name and Size (A): _____

Group Fuse Name: _____

Size: 16A, 20A, 25A, 32A, 35A, 50A, 63A, other: ____

Quick Connector Phase Order: L123, L231, L312, L132, L213, L321

Installation Date: _____

Installer (Name and Company): _____

Additional Information (e.g., coordinates of public charging point):

Other Charging Devices on the Same Fuse:

Device Identification Code: Left _____ Right _____

Quick Connector Phase Order: L123, L231, L312, L132, L213, L321

Device Identification Code: Left _____ Right _____

Quick Connector Phase Order: L123, L231, L312, L132, L213, L321

Device Identification Code: Left _____ Right _____

Quick Connector Phase Order: L123, L231, L312, L132, L213, L321

Device Identification Code: Left _____ Right _____

Quick Connector Phase Order: L123, L231, L312, L132, L213, L321

Device Identification Code: Left _____ Right _____

Quick Connector Phase Order: L123, L231, L312, L132, L213, L321